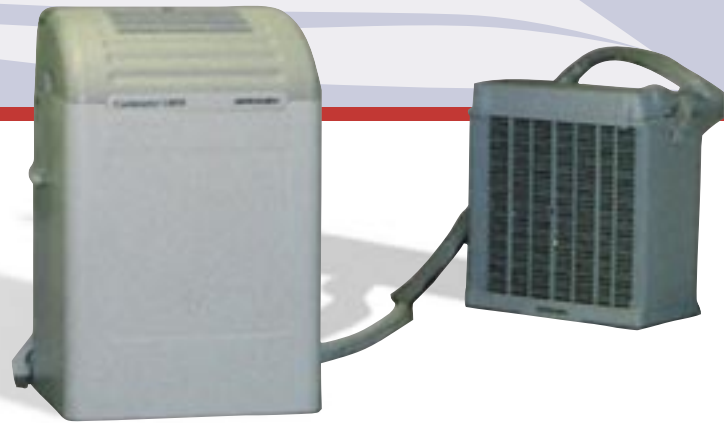




# CA147

## Cresta 147

The **mobile** solution for temporary or permanent air conditioning



### Features and specifications

- \* Power consumption of just 1250watts gives 4.1kW of cooling (14000Btu's)
- \* Power supply 240V - 1ph - 50hz
- \* Rotary type compressor
- \* Environmentally acceptable refrigerant R407C
- \* Indoor and outdoor unit can split for easy installation
- \* 3.0m extendible to 6.0m interconnecting flexible refrigerant line
- \* 24 hour timer can prepare a climate before occupation
- \* Precision temperature control creates a stable comfortable working temperature
- \* 2 speed air movement fan discharging up to 550m<sup>3</sup>/hr
- \* Quiet operation for minimal disturbance
- \* Automatic condensate removal
- \* Indoor unit weighs just 40kG's and measures D290mm x W430mm x H670mm
- \* Outdoor unit weighs 10kG's and measures D220mm x W440mm x H440mm
- \* Robust plastic coated sheet steel construction

The **AirCoolmation Cresta147** is a powerful mobile air conditioner with a cooling capacity of 4.1kW (14000Btu's) and is ideal for office cooling or localised cooling in a larger space. It is a split unit having an outdoor section for heat rejection which can be hung through a window, located on an outside ledge or in some adjacent area where the rejected heat would be of no consequence, ie warehouse or factory space.

The outdoor heat rejection unit and indoor cooling unit are interconnected with a 3.0m flexible refrigerant line which can be extended by a further 3.0m to a 6.0m length.

Cooling and dehumidifying at the same time, the **Cresta147** creates a cool and comfortable working environment at the turn of a switch, but is also fitted with a 2kW electric heater to cope with the occasional chilly morning or late afternoon.